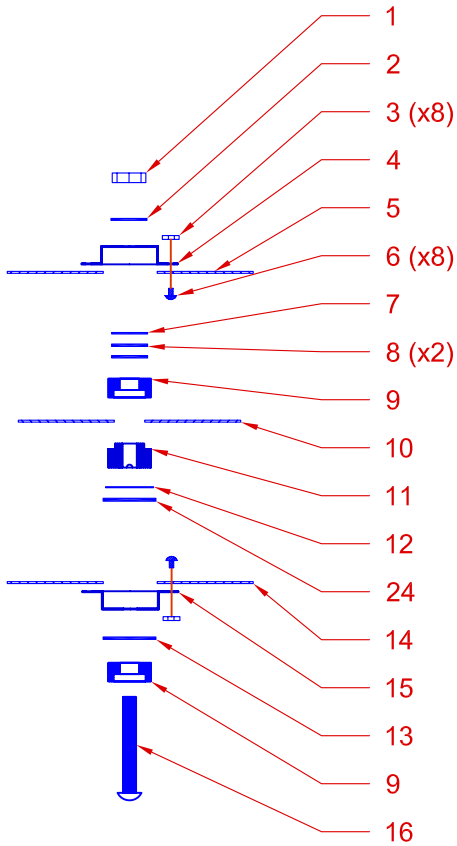
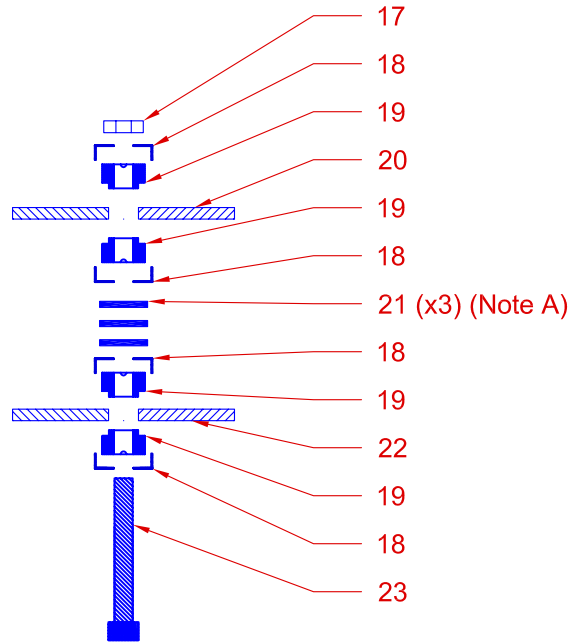


REVISIONS				
ZONE	REV	DESCRIPTION	DATE	APPROVED

REV B Changed item 6 from 504074 to 504072 (10/5/05)



Grid Assembly Stack



Grid Mount Stack

Item	Description	Part No.
1	6-32 Nut	504082
2	#6 Washer 0.020"T	504089
3	0-80 Nut	504071
4	No 6 Hat	504024
5	Screen Grid	504224
6	0-80 Screw	504072
7	No 6 Washer, 0.015"T	504284
8	No 6 Washer, 0.025"T	504283
9	No 6 Female Insulator	504006
10	Accel Grid	504225
11	No 6 Male Insulator	504008
12	Washer, 0.010"T	504151
13	Washer, 0.030"T	504144
14	Decel Grid	504226
15	Hat	504025
16	6-32 x 0.875 BHCS	504078
17	10-32 Nut	504086
18	No 10 Cup	504026
19	No 10 Male Insulator	504007
20	Grid Retainer Plate	REF
21	Washer, 0.062"T	504090
22	Grid Mount Plate	REF
23	10-32 SHCS x 1.500"	504375
24	Washer, 0.025"T	504287

Note A: The number of washers may vary depending upon skirt height. The gap between mount plate skirt and decel grid must equal 0.000". The gap between the retainer plate and screen grid must equal 0.000".



(970) 663-6988

1714 Topaz Dr. Unit 110
Loveland, CO 80537

Unless otherwise stated tolerances are +/- 0.001". Do not scale drawing. Remove all burrs. All threads are CLASS 2.

This drawing is the property of Plasma Process Group, Inc. and may not be reproduced or disclosed to others without authorization by Plasma Process Group, Inc.

DRAWN: BWB CAD: BWB		SIZE	FSCM NO.	DWG NO.	REV
		SCALE 1:2		504137 - 16cm Grid Assy. B	B
		Date: 4/11/05		SHEET 1 of 1	