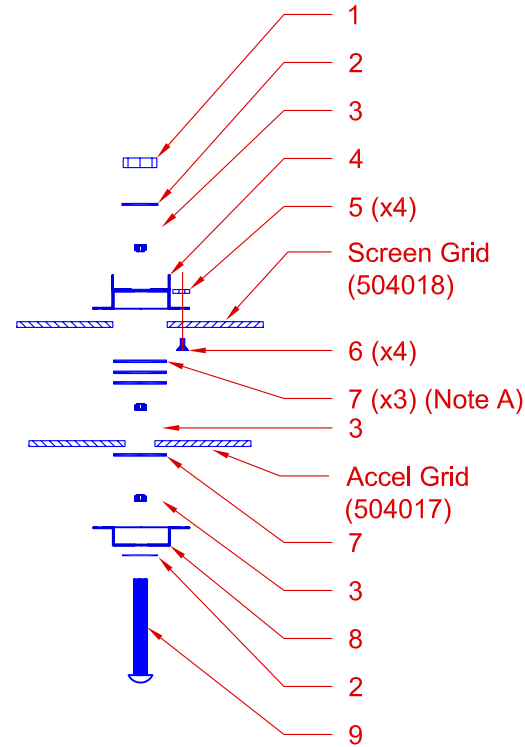
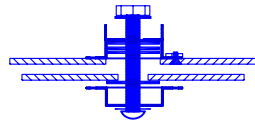



Item	Description	Part No.
1	6-32 Nut	504082
2	#6 Washer 0.020"T	504089
3	#6 M Insulator	504008
4	Hat-Cup	504253
5	0-80 Nut	504071
6	0-80 Screw	504074
7	Washer 0.312" ID x 0.550"OD x 0.025"T	504144
8	#6 Hat	504024
9	6-32 SL Screw	504080

REVISIONS				
ZONE	REV	DESCRIPTION	DATE	APPROVED



Grid Assembly Stack

Note A: Total thickness of washer stack should be 0.080".

 (970) 663-6988 1714 Topaz Dr. Unit 110 Loveland, CO 80537	Unless otherwise stated tolerances are +/- 0.005". Do not scale drawing. Remove all burrs. All threads are CLASS 2.			
	This drawing is the property of Plasma Process Group, Inc. and may not be reproduced or disclosed to others without authorization by Plasma Process Group, Inc.			
	SIZE	FSCM NO.	DWG NO.	REV
			504198 - 11 cm G ASM	A
DRAWN: BWB CAD: BWB	SCALE 1:2	Date: 10/18/04	SHEET 1 of 1	