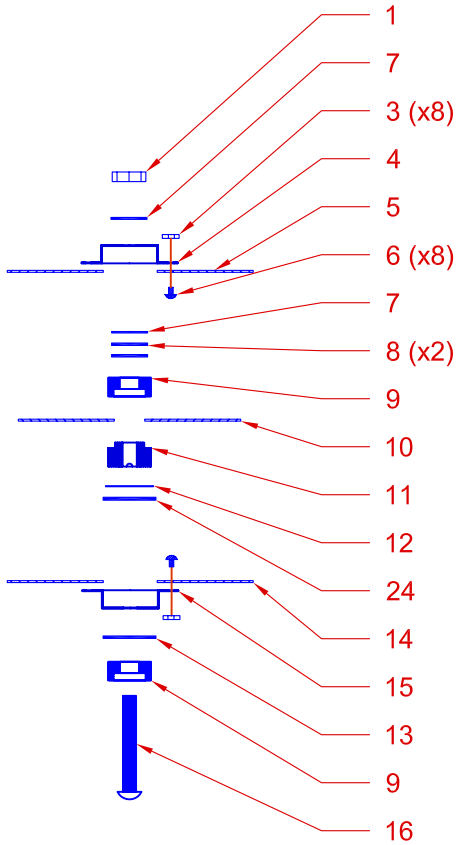
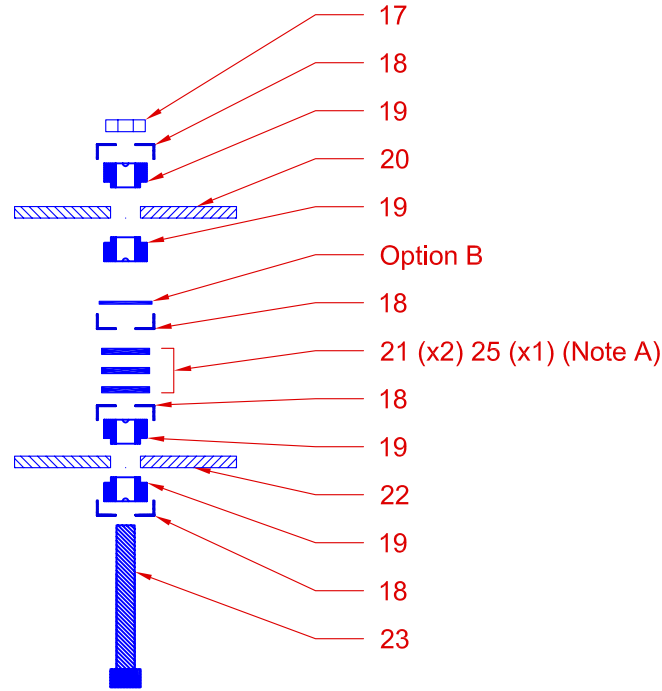


REVISIONS				
ZONE	REV	DESCRIPTION	DATE	APPROVED
	REV B	Changed item 24 from 504144 to 504287, Added Note A		
	REV C	Changed item 6 from 504074 to 504072 (10/5/05)		
	REV D	Added Option B. Item 504151 to 504286, (3/21/06)		
	REV E	Changed item 2 to 7; item 13 to 504632; item 21 to 504630; Modified Opt. B (8/23/06)		



Grid Assembly Stack



Grid Mount Stack

Item	Description	Part No.
1	6-32 Nut	504082
3	0-80 Nut	504071
4	No 6 Hat	504024
5	Screen Grid	504293
6	0-80 Screw	504072
7	No 6 Washer, 0.015"T	504284
8	No 6 Washer, 0.025"T	504283
9	No 6 Female Insulator	504006
10	Accel Grid	504294
11	No 6 Male Insulator	504008
12	Washer, 0.010"T	504286
13	Washer, 0.030"T	504632
14	Decel Grid	504295
15	Hat	504025
16	6-32 x 0.875 BHCS	504078
17	10-32 Nut	504086
18	No 10 Cup	504026
19	No 10 Male Insulator	504007
20	Grid Retainer Plate	REF
21	Washer, 0.062"T	504630
22	Grid Mount Plate	REF
23	10-32 SHCS x 1.500"	504375
24	Washer, 0.025"T	504287
25	Washer, 0.030"T	504631

Note A: The number of washers may vary depending upon skirt height. The gap between mount plate skirt and decel grid must equal 0.000". The gap between the retainer plate and screen grid must equal 0.000".

Option B: Replace existing 0.010" washer with 24 (x1). Minimize gap without compression of grids.



(970) 663-6988

1714 Topaz Dr. Unit 110
Loveland, CO 80537

DRAWN: BWB CAD: BWB

Unless otherwise stated tolerances are +/- 0.001". Do not scale drawing. Remove all burrs. All threads are CLASS 2.

This drawing is the property of Plasma Process Group, Inc. and may not be reproduced or disclosed to others without authorization by Plasma Process Group, Inc.

SIZE	FSCM NO.	DWG NO.	REV
		504296 - 16cm Grid Assy.	E
SCALE 1:2		Date: 3/18/05	SHEET 1 of 1