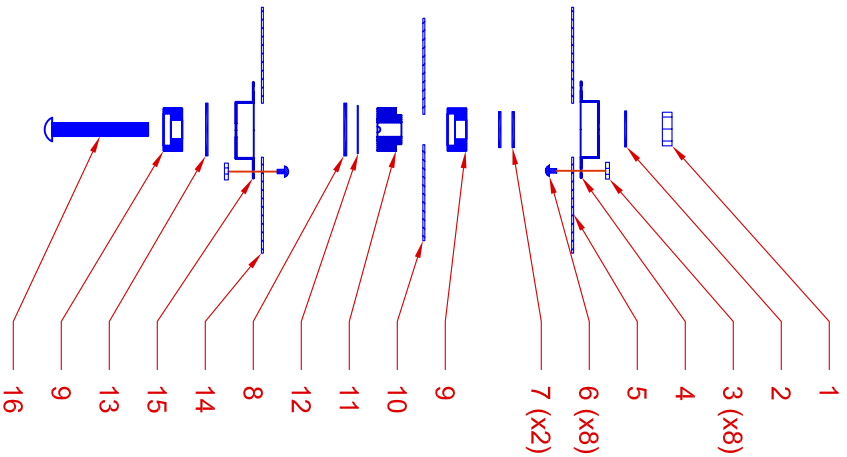
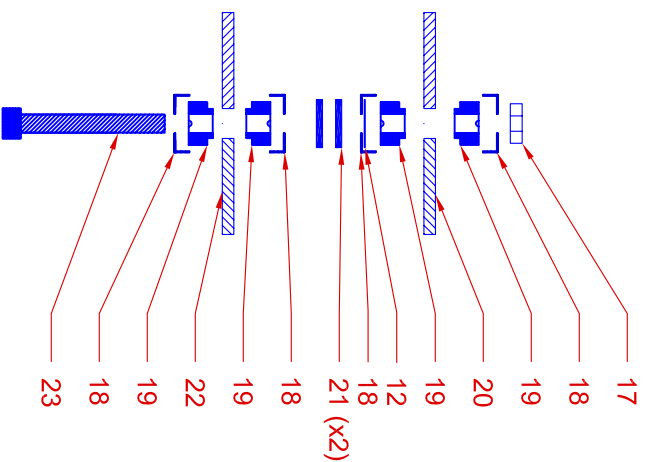


REVISIONS				
ZONE	REV	DESCRIPTION	DATE	APPROVED
	REV B	Changed item 6 from 504074 to 504072 (10/5/05)		
	REV C	Changed washers to precision (12/15/06)		
	REV D	Added 504286 to mount stack (3/9/07)		
	REV E	Changed item 21 and 23 to precision (9/7/10)		



Grid Assembly Stack



Grid Mount Stack

Item	Description	Part No.
1	6-32 Nut	504082
2	#6 Washer 0.015" T	504284
3	0-80 Nut	504071
4	No 6 Hat	504024
5	Screen Grid	504221
6	0-80 Screw	504072
7	No 6 Washer, 0.025" T	504283
8	Washer, 0.025" T	504287
9	No 6 Female Insulator	504006
10	Accel Grid	504222
11	No 6 Male Insulator	504008
12	Washer, 0.010" T	504286
13	Washer, 0.030" T	504632
14	Decel Grid	504223
15	Hat	504025
16	6-32 x 0.875 BHCS	504078
17	10-32 Nut	504086
18	No 10 Cup	504026
19	No 10 Male Insulator	504007
20	Grid Retainer Plate	REF
21	Washer, 0.062" T	504630
22	Grid Mount Plate	REF
23	10-32 SHCS x 1.375"	504402

Unless otherwise stated tolerances are +/- 0.001". Do not scale drawing. Remove all burrs. All threads are CLASS 2.



(970) 663-6988

1714 Topaz Dr. Unit 110
Loveland, CO 80537

This drawing is the property of Plasma Process Group, Inc. and may not be reproduced or disclosed to others without authorization by Plasma Process Group, Inc.

SIZE FSCM NO.

DWG NO. 504391 - 12cm Grid Assy. E

REV

DRAWN: BWB CAD: BWB

SCALE 1:2

Date: 4/11/05

SHEET 1 of 1