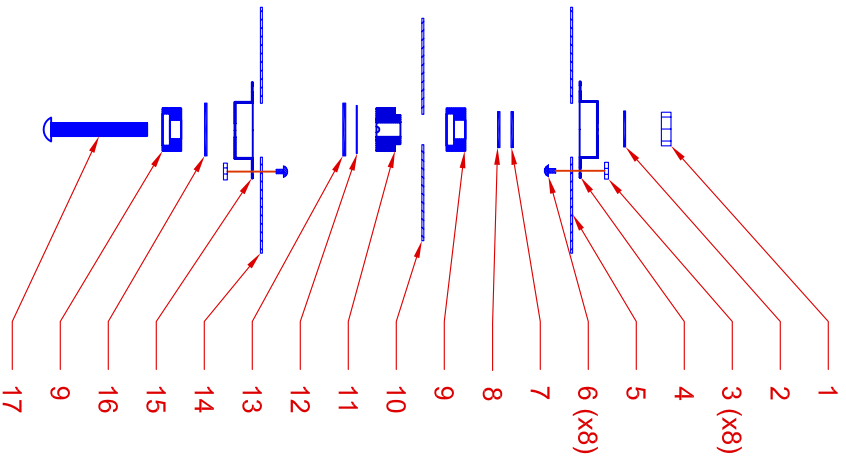
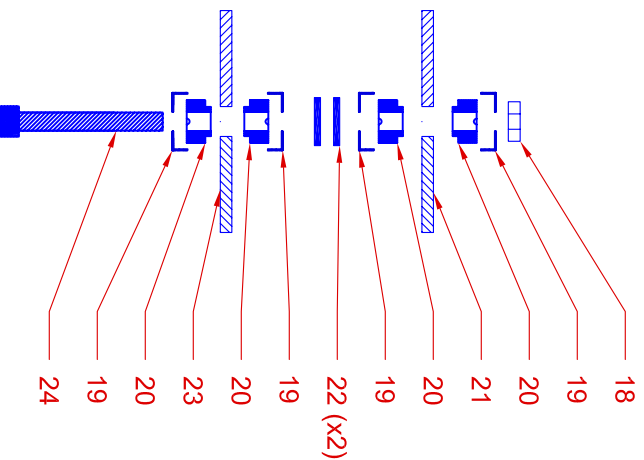


REVISIONS				
ZONE	REV	DESCRIPTION	DATE	APPROVED
	REV B	Changed Item 24 to 1.375" (9/7/10)		



Grid Assembly Stack



Grid Mount Stack (REF)

Item	Description	Part No.
1	6-32 Nut	504082
2	Washer 0.015" T	504284
3	0-80 Nut	504071
4	No 6 Hat	504024
5	Screen Grid	504590
6	0-80 Screw	504072
7	Washer, 0.010" T	504285
8	Washer, 0.025" T	504283
9	No 6 Female Insulator	504006
10	Accel Grid	504591
11	No 6 Male Insulator	504008
12	Washer, 0.010" T	504286
13	Washer, 0.025" T	504287
14	Decel Grid	504592
15	Hat	504025
16	Washer, 0.030" T	504632
17	6-32 x 0.875 BHCS	504078
18	10-32 Nut	504086
19	No 10 Cup	504026
20	No 10 Male Insulator	504007
21	Grid Retainer Plate	REF
22	Washer, 0.060" T	504630
23	Grid Mount Plate	REF
24	10-32 SHCS x 1.375"	504402

Unless otherwise stated tolerances are +/- 0.001". Do not scale drawing. Remove all burrs. All threads are CLASS 2.

 **plasma process group**
 (970) 663-6988

This drawing is the property of Plasma Process Group, Inc. and may not be reproduced or disclosed to others without authorization by Plasma Process Group, Inc.

1714 Topaz Dr. Unit 110
 Loveland, CO 80537

SIZE FSCM NO.

DWG NO. **504593 - 12cm Grid Assy.** REV B

DRAWN: BWB CAD: BWB

SCALE **1:2**

Date: 9/10/07

SHEET **1 of 1**