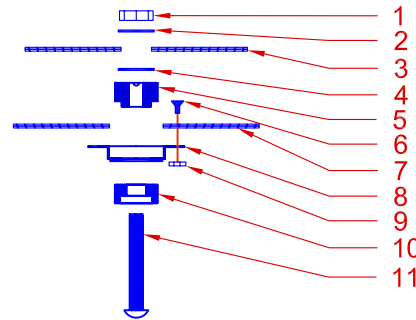
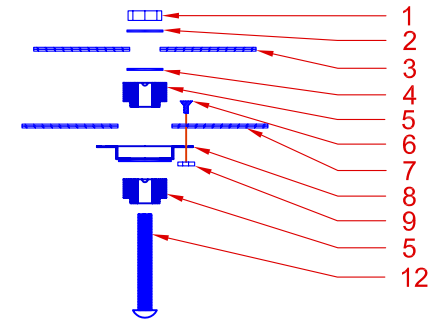


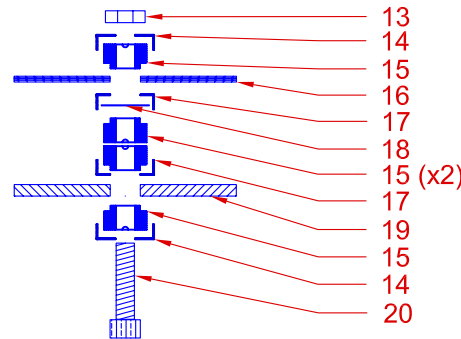
REVISIONS				
ZONE	REV	DESCRIPTION	DATE	APPROVED



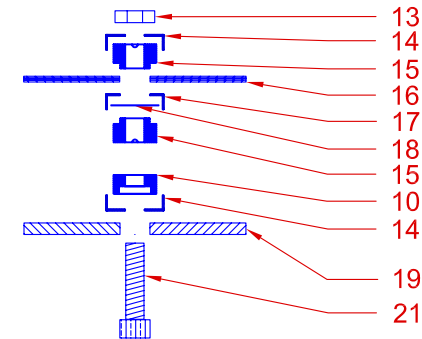
Grid Assembly Stack (Type A, 6 ea.)



Grid Assembly Stack (Type B, 2 ea.)



Grid Mount Stack (Type C, 2 ea.)



Grid Mount Stack (Type D, 4 ea.)

Item	Description	Part No.
1	6-32 Nut	504082
2	#6 Washer 0.015"T	504284
3	6x30 cm G Grid S	504759
4	No 6 Washer, 0.025"T	504283
5	No 6 Male Insulator	504008
6	0-80 Screw FL	504073
7	6x30 cm G Grid A	504760
8	Hat, 0.100 Deep	504777
9	0-80 Nut	504071
10	No 10 Female Insulator	504006
11	6-32 x 0.625 BHCS	504813
12	6-32 x 0.750 BHCS	504814
13	10-32 Nut	504086
14	No 10 Cup	504026
15	No 10 Male Insulator	504007
16	6x30 Grid Retainer Plate	504762
17	Cup, 0.313 ID	504027
18	Washer, 0.025"T	504287
19	6x30 Grid Mount Plate	504764
20	10-32 SHCS x 1.250"	504077
21	10-32 SHCS x 1.000"	504816



(970) 663-6988

1714 Topaz Dr. Unit 110
Loveland, CO 80537

DRAWN: BWB CAD: BWB

Unless otherwise stated tolerances are +/- 0.001". Do not scale drawing. Remove all burrs. All threads are CLASS 2.

This drawing is the property of Plasma Process Group, Inc. and may not be reproduced or disclosed to others without authorization by Plasma Process Group, Inc.

SIZE	FSCM NO.	DWG NO.	REV
		504765 - 6x30 Grid Assy.	A

SCALE 1:2	Date: 9/18/08	SHEET 1 of 1
-----------	---------------	--------------