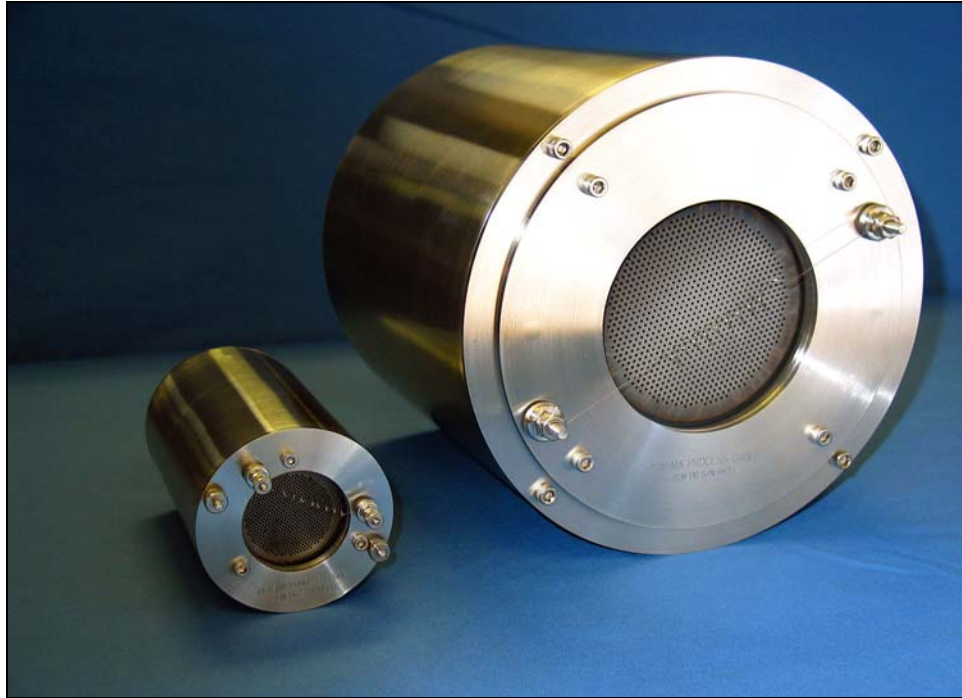




3 cm and 8 cm DC Ion Beam Sources



Features

- filament cathode
- filament neutralizer / PBN
- flange or internal mounting
- versatile power range
- easy maintenance

Applications

- sputter deposition
- etching
- ion beam assisted deposition
- materials research
- ion thruster research

Description

Plasma Process Group offers two DC ion beam sources, 3 cm and 8 cm, for use in surface modification applications. The 3 cm source is ideal for small research systems, while the 8 cm source covers wider areas typically found in small batch process systems. The 3 cm sources have filament cathodes and neutralizers, and the 8 cm can operate with a filament neutralizer or a PBN. Both sources will operate with typical process gases such as argon or nitrogen.

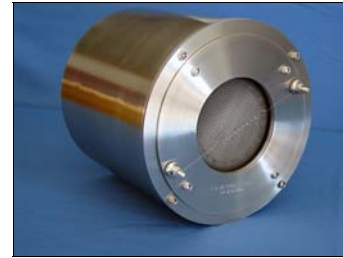
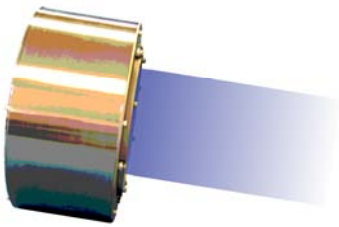
Sources can be mounted to a flange for fixed beam geometry, or internally mounted for adjustable orientation. Our sources were designed with maintenance in mind. They use fewer parts than previous generations of ion sources, which makes installation and maintenance easier.

Whether you're in a research or production environment, Plasma Process Group is committed to providing you with the best support possible. Help is never more than a phone call away (or email if you prefer). Our people have many years of experience with ion beam sources, systems, and applications, and we're happy to share that with you. Give us a call.

Specifications

3 cm Source

8 cm Source



Ion source	3 cm	8 cm
Model number	03DC05	08DC04
Beam size at grids	3 cm	8 cm
Beam current	25-75 mA	25-250 mA
Beam energy	50-1200 eV	50-1500 eV
Grid material	pyrolytic graphite	pyrolytic graphite
Beam neutralization	filament	filament / PBN
Cooling	radiant	radiant or water
Power supply	I-BEAM™ 601	I-BEAM™ 601/602
Weight	1.1 Kg (2.5 lbs)	5.9 Kg (13 lbs)

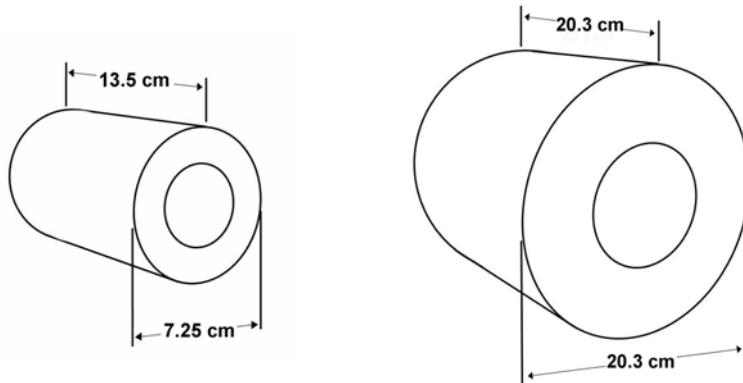
Mounting
flange mount



internal mount



Dimensions



Ordering Information: Ion sources are available with options such as internal or flange mounting, grids, radiant or water cooling, and kits to facilitate installation. Please contact us to configure your ion source.

Suggested Accessories:

- IBEAM 601 I-BEAM™ 601 FC/FN Power Supply
- IBEAM 602 I-BEAM™ 602 FC/PBN Power Supply



7330 Greendale Rd.
Windsor, CO 80550 USA
phone 970-663-6988
fax 970-669-2312
www.plasmaprocessgroup.com